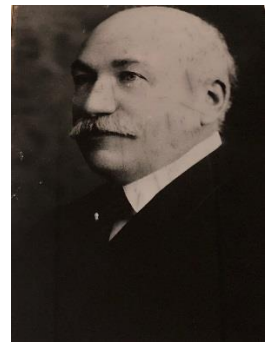


Emil Selig
President: 1904-1912

From 1896 onward, Selig served as vice-president and pitched in during the prolonged illness of his predecessor. After serving as president for a decade, he was declared an Honorary President. Renowned RS Dr. Rabbi Jastrow died in 1904. When the Jewish Theological Seminary was reorganized in 1904, RS continued its membership in the JTS. During Selig's term, two suggestions were made: hiring an Assistant Rabbi, and establishing a South Philadelphia branch of RS. In 1905, a committee of RS decided that chanting should be an acceptable feature of services, and that a cantor be hired to assist in the school and at services.



In 1905, former president Benjamin Teller passed away, and he bequeathed \$50,000 for erection of a school building, which was built at Broad and Jefferson and dedicated in 1908. In 1908, Rabbi Eli Mayer was hired to assist on the pulpit and in the school, and was made Associate Rabbi in 1915. In 1911, the Junior Congregation was created, which would conduct services in remote locations in the neighborhood during High Holidays due to overflowing crowds in the main building. During Selig's term, there was an increase in seating in the sanctuary, plus an improvement to the Congregational Cemetery. Later, Selig chaired the Choir Committee, which oversaw the experimental movement of the choir from the loft to the pulpit platform. The RS Sisterhood was formed just at the end of his presidency.

Written by Jerry Silverman