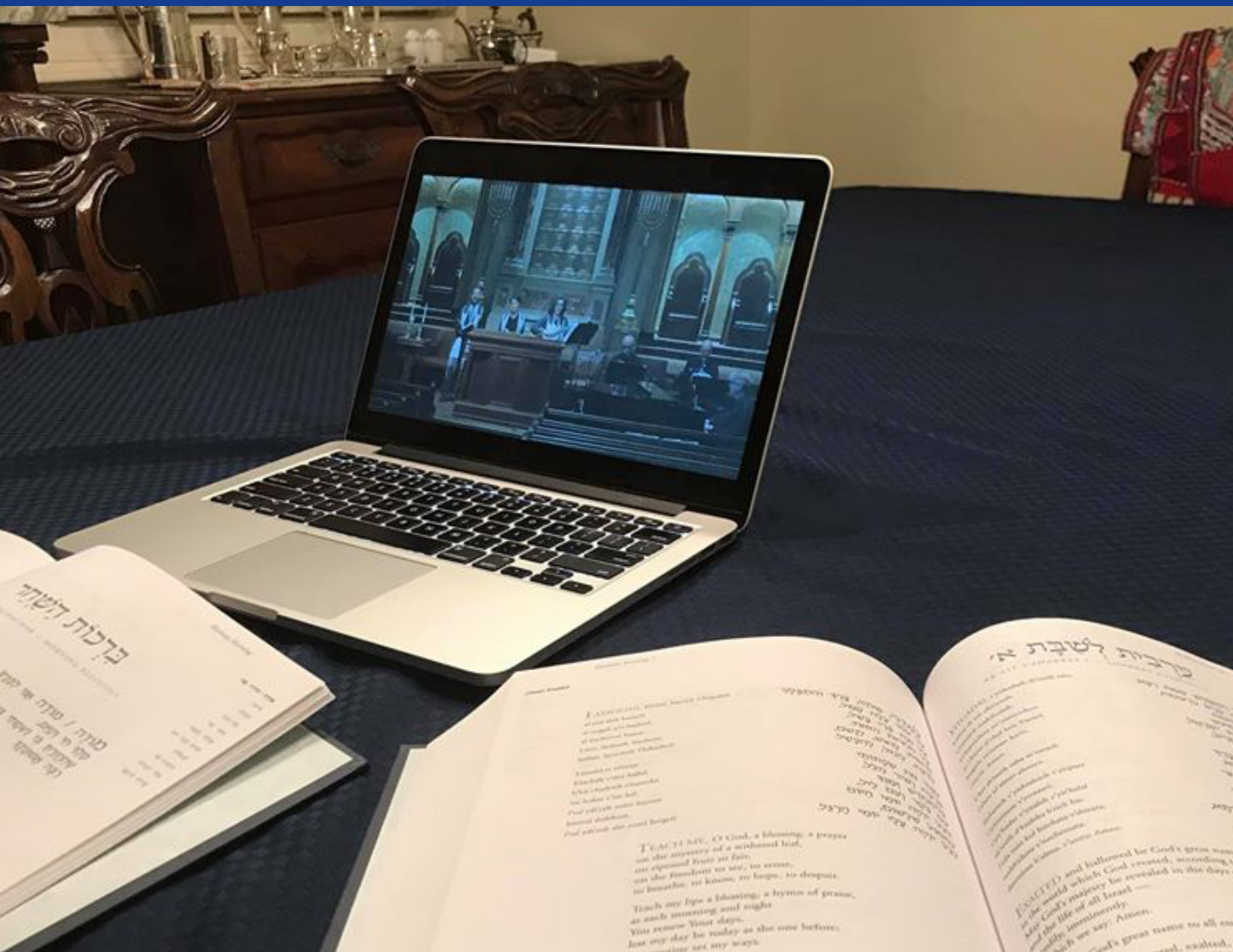


May 2020/5780

♦ Immersed in Jewish time ♦ Guided by enduring values ♦ Compelled to moral action  
**We create profound connections**



# Discover Your New eBulletin

Upcoming programs and messages inside to  
keep us connected through this time of isolation

# Upcoming Events

## Services

**\*All services will be on Zoom.**

[Shabbat Evening Services](#) are on **Friday at 6:00pm**.

*Kaddish* will be recited at Friday *Shabbat* evening services and during [Saturday morning Torah Study](#) at 9:15am.

On Friday, May 29, Rabbi Emeritus Bill Kuhn will give the *D'var Torah*.

## Connection Groups

**\*All events will be on Zoom.**

### Families with Young Children

- Join together before *Shabbat* for blessings and songs at [Pre-Shabbat Sing](#) every Friday at 10:30am.
- Celebrate *Shavuot* by singing and making ice cream at a special [Shavuot Sing Along & Ice Cream Social](#) on Wednesday, May 20 at 5:00pm.

### LawyeRS

- Share your experience on what it is like to practice law in the shadow of a pandemic at a [Virtual Check-In](#) on Monday, May 11 at 5:00pm.
- Discuss the questions that have arisen on the extent and scope of presidential power under Article 2 of the U.S. Constitution at [The Federalist Papers group](#) on Tuesday, May 12 at 7:00pm. Contact [Lenny Goldberger](#).

### Seasoned Solos

- Gather with friends at our [Virtual Gathering](#) every Friday at 7:15pm.

### Young Friends

- Join for [Torah Study](#) in your living room on Thursday, May 21 at 7:30pm. RSVP on [Facebook](#).

## W Connection

[Tuesday, May 19 at 4:00pm](#)

A group for widows who are ready to rebuild and take control of their lives.

## LearnRS (Adult Education)

**\*All events will be on Zoom.**

Discuss the weekly *Torah* portion with a member of our clergy at [Saturday Morning Torah Study](#)— every Saturday at 9:15am.

Deepen your awareness with [Jewish Meditation](#) every Friday at 4:30pm. No experience necessary.

Connect with each other and read a good book with our [ReadRS](#) on Wednesday, June 24 at 6:30pm. This month's book is *Apeirogon* by Colum McCann. Discussion led by Rabbi Eli Freedman.

## New Days of Learning

**\*All events will be on Zoom.**

Join with fellow congregants of all ages teaching and learning together at the [New Days of Learning](#) on Monday, May 11 through Friday, May 15. See pages 8 & 9 for more information.

## Annual Congregational Meeting

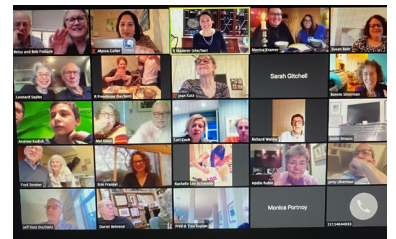
**Wednesday, May 27 at 7:00pm on Zoom**

Join together for our Annual Congregational Meeting when our new Board of Directors is installed and hear our vision for the path forward during this pandemic. See [page 7](#).

## Weekly Congregation Check-In

**Every Wednesday at 7:00pm on Zoom**

Join a member of our clergy and Dr. Fran Martin to check-in and support each other at a [Weekly Congregation Check-In](#).



## Virtual Shavuot Night of Learning

Thursday, May 28; [Erev Shavuot Gathering](#) with the Philadelphia Jewish community and rabbis of the Center City Kehillah at 6:45pm on Zoom.

As learning opportunities from throughout the Center City Kehillah community are finalized, they will be added to the [Center City Kehillah website](#) before *Shavuot*, including the class RS is contributing.

# Clergy: Rabbi Jill Maderer



**Sharing  
Together**

## Even as We Watch Our Feet, We Shall Pack Our Timbrels: RS in the Time of a Pandemic

What, for you, represents this time of pandemic and isolation? The face mask? The rainbow pictures in neighbors' windows? The X taped on the floor to space us out at the drugstore prescriptions line? For me, I think it's the Rodeph Shalom Zoom chat box. Week after week, the chat on our Zoom gatherings contains *Shabbat* greetings and messages that reach out with care, the names of our loved ones who seek healing, and our loved ones we remember for *Kaddish*. It contains compassion and concern, heartfelt appreciation during Cantor Frankel's tribute, links to texts we study. The chat box even contains reminders to unmute ourselves when we speak! So often, as a snapshot of our ongoing community, the chat box reveals Judaism's ongoing wisdom in our lives and it reveals our continued congregational purpose as it holds our care and love.

This experience of pandemic has been so hard. My heart goes out to all of you for the many challenges I see in your lives. So many are living alone, fearing job loss, parenting young children, encountering risk as essential workers, experiencing physical or mental illness or stumbling blocks in recovery, facing hard decisions in business, worrying for elders. And my heart goes out to all of you for the losses I see in your lives. So many are sacrificing *B'nai Mitzvah*, graduation, school performances and final athletic games, gathering with mourners, weddings, milestone birthdays. And, in our isolation, all of us suffer the loss of human connection as we worry for ourselves, our community

and our world.

Although I am not at all implying that the tragedy is worth it, I am finding areas for gratitude as well as I witness our Rodeph Shalom vision sustaining us in new ways. Immersed in Jewish time, guided by enduring values, compelled to moral action, we create profound connections. How powerful it has been to join together virtually for *Shabbat*, *Torah* Study, congregational check-ins, Connection Group gatherings, and even *shivas*. How uplifting to have congregants calling congregants, reaching out with care. How inspiring to see so many congregants giving *tzedakah* to our Building Staff Gift Fund and to our Philabundance Fund, supporting underserved people in our city. I am grateful to you for reaching out and remaining connected in community, for trying new ways to participate, and for ensuring that physical distancing is not the same as social distancing.

Firmly grounded in our congregational and Jewish history, and committed to the future of the Jewish people, the purpose of Rodeph Shalom in our lives, in our city, and in our world remains clear, now more than ever.

### **Leading Together**

Along with participants in our RS *Torah* Study, I am constantly compelled by the way our sacred text can express multiple truths in a single stroke. *Torah* describes situations both mundane and sacred, characters both flawed and principled, faith both uncertain and strong, vision both real and ideal.

When the Israelites escape the slavery of Egypt and make their way through the Sea of Reeds, the *Midrash*/legend teaches that

they stare down at their feet. They need to be cautious they don't slip, and circumstance demands they protect their safety. The caution almost keeps them from noticing the miracle. Still, they need to watch their feet. The same story of the Exodus describes Miriam and the women on the other side of the Sea of Reeds. What is the first thing they do when they step onto free land? They lead the people in song and in dance with timbrels! During the crisis of escape, they have the forethought to pack musical instruments! Even in an uncertain world for which no one could plan, they prepare for song and dance, for ritual and gratitude, for praise and for the fullness of spiritual life.

We need to watch our feet, and we shall pack our timbrels. *Torah* is our every day, and, at the same time, it is our highest aspiration.

Right now, in May 2020, the Rodeph Shalom everyday continues to require crisis management. Circumstance requires us to sacrifice physical community, to depart from congregational norms, and to anticipate the need for changes to High Holy Day observances and community plans next year.

I am committed to the vigilance necessary to do our part for the safety of our congregation, our city and our world; thus, we will continue to distance according to the strictest public health guidelines. There are times when religious institutions can secure exemptions for gathering; however, we do not seek to leverage such exemptions. Just as Rodeph Shalom closed the physical office before the state required and closed our physical Berkman Mercas Limud before the schools closed, Rodeph Shalom will continue to demonstrate commitment to the greater good and highest

Rabbi Maderer continued on [page 13](#)

# Clergy: Rabbi Eli Freedman



## Mourning in the Time of Coronavirus

I attended a virtual funeral two weeks ago. It was for a mentor of mine, Rabbi Neil Kraft. Rabbi

Kraft, originally from Boston, was my rabbi in London where I spent three years of rabbinical school. He was a mensch, and the world is dimmer with his passing.

I'm not sure how many of you have attended *shivas* or funerals in this new age of social distancing. For anyone that has, I imagine you can relate - it feels really different. A class can move online - it's not the exact same, but for the most part, you can still learn and interact with teachers and classmates. Death is different.

Judaism was not meant to be practiced in a world of social distancing. It is a religion focused on communal gathering. And death is one of those times in which we gather.

As Rabbi Kraft died from complications of COVID-19, there were only two people physically present at his graveside service; a rabbi and a gravedigger. His own immediate family wasn't even there. I feel for his wife and two sons; they couldn't cut the *kriah* ribbon in front of the grave, they couldn't properly eulogize him, they couldn't say kaddish at the cemetery, and they couldn't shovel earth onto his grave as one final act of love.

I find solace in our amazing technology that allowed the funeral and *shiva* to take place virtually for the Kraft family and for so many others in our community. I also find solace in our sacred text, in our *Torah*. I find solace in knowing that we are not the first to struggle with how to honor the dead while practicing social distancing.

In this week's *Torah* portion, *Shmini*, we read about the untimely death of two of Aaron's sons, Nadav and Avihu, and how Aaron and his

remaining sons are prohibited from mourning. We read in Leviticus, chapter 10: "And fire came forth from Adonai and consumed them. And Aaron was silent. Moses called Mishael and Elzaphan and said to them, 'Come forward and carry your kinsmen, by their tunics, away from the front of the sanctuary to a place outside the camp.'"

And Moses said to Aaron and his sons, Eleazar and Ithamar 'Do not rend your clothes, lest you die and anger strike the whole community. But your kin, all the house of Israel, shall bewail the burning that Adonai has wrought.'"

There is a lot of pain in this text. In addition to the loss of their loved ones, Aaron, Eleazar, and Ithamar, are also dealing with the pain and loss of not being able to properly mourn. They can't hold Nadav and Avihu one last time, they can't do the ritual of *kriah*, they can't eulogize them, they can't bury them.

Nadav and Avihu did not have the novel coronavirus, but they were in a state of ritual purity at the time of their deaths, and thus their bodies could not be touched. Their cousins are to carry their bodies outside the camp by their tunics.

Recently, I've read stories of people dying alone in a hospital, whether from the virus or not; their loved ones unable to be with them physically at that moment. Not able to hold their spouse, parents, grandparents, child, friend in their arms one last time. I can't imagine the heartache.

I've also heard from congregants who, like Aaron and his sons, have not been able to take part in traditional mourning practices. They are unable to practice *kriah* - the rending of their garments—or physically bury their loved ones. And they, like Aaron, are often silent, unable to eulogize the deceased in a way that feels fitting. Our tradition created these rituals to help us in hard times, and when we can't turn to ritual, it hurts. It is one more loss that we must bear.

Rashbam, a grandson of Rashi,

wrote in his commentary on this portion: "Moses said to Aaron, 'Do not mourn nor weep, and do not desist from carrying on with your priestly duties... I do not want that you should desecrate God by letting your private concerns take precedence.'"

Although Rashbam's words might sting a bit and lack some sensitivity, his point is nonetheless valid: sometimes the needs of our community outweigh the needs of an individual mourner.

We are in one of those times. It is a painful sacrifice that Moses is asking of Aaron and his remaining sons. It is a painful sacrifice that we ask of all the mourners in our community.

There is a *nechemta* (a sentiment of hope) at the end. Moses says to Aaron that, although you, Aaron, may not mourn, "your kin, all the house of Israel, shall bewail the burning that Adonai has wrought."

We all mourn together. For those that were unable to mourn properly, take solace that the whole Jewish community, your kin, all the house of Israel, is with you.

*Yom HaShoah* marks when the Jewish world gathers and all the house of Israel mourns once again for the six million Jews killed during the Holocaust. Whether we personally lost family in the Holocaust or not, we all mourn our collective loss.

When I first tried to log on to the livestreamed funeral for Rabbi Kraft, I couldn't get in. I was so frustrated. The webpage wasn't loading. I later discovered that over 1,000 people all tried logging in at roughly the same time and crashed the server. I know Rabbi Kraft would have gotten a kick out of that!

All the house of Israel bewailed him. I hope that this brought some comfort to his grieving family. I know it did for me. *Shabbat Shalom*.

*Eli Freedman*

# Clergy: Cantor Frankel



## Thank You and *L'hitraot*

**O**n *Yom Kippur* afternoon this past High Holy Day season, I had a moment to look out and consider all of you gathered in the sanctuary, on the main floor, and in the balcony. It isn't until the afternoon of *Yom*

*Kippur* that the pace of the service slows down enough for me to have a moment of reflection, and I honestly don't remember many of these moments during High Holy Day services over the past eight years, so it is probably a testament to my sense of home in the sanctuary after all of these years.

When I looked out, when I considered all of you in your pews with your *machzorim*, many of you having been in those seats since early that morning, I caught my breath. My overwhelming emotion was awe. Judaism is amazing. On specific days in otherwise hectically busy lives, we stop. We come together. We focus on what's most important in our lives. The sanctuary would not be that full unless we all had agreed to participate in this exercise. The fact that our tradition requires it of us is amazing. The fact that we continue to do it these thousands of years later may be even more amazing.

I have been privileged to have such a view on many occasions over many years from our *bimah*. I have watched countless families celebrate *B'nai Mitzvah*. I have watched the community assemble to see children sing and dance in musicals. I have watched as the Philadelphia community at large gathered, standing room only, to show solidarity after the horror of the shooting in Pittsburgh. And I have watched as you sing, pray, and greet each other every *Shabbat* evening.

Judaism is amazing. Those of us who choose to live

according to its times and seasons, its values and ethics, its music and culture are so much richer for it. And I am grateful to have played any part in your Jewish life, as prayer leader, teacher, pastor, and officiant. I have been witness to such beautiful things.

Thank you for letting me into your lives, for considering my perspective on Jewish music and prayer and being open to what I have shared, for studying *Torah* with me, for studying *Torah* trope with me, for sharing memories of your loved ones, for singing with me. Thank you for the fullness of heart that I feel now, fueled by the sense that it has been eight years full of connecting with all of you through Judaism.

I have been guided by the teaching in Psalms 90, "Teach us to number our days, that we may gain a heart of wisdom." Treat each day as an opportunity. Understand that the number of our days is limited. When you realize how you want to fill each day, your heart will swell with understanding.

After these years of serving this congregation and all of you, my heart swells, confident as I was the first day I stepped into our sanctuary that, if we embrace the guidance of Jewish tradition in our lives, we will live lives of meaning.

My prayer is that we all continue to explore the full extent of our ability to live Jewishly. May this congregation and all its congregants continue to be blessed in the years to come. I am deeply grateful for the years I was asked to lead you, thank you.

*L'hitraot*, until we meet again.

### ***Rabbi Maderer's remarks to honor Cantor Frankel during the tribute following Shabbat services on May 1:***

In just these eight years, Cantor Frankel has accomplished her RS vision and a career's worth of achievement. She leaves the Rodeph Shalom cantorate, and the congregation, stronger.

Our *B'nai Mitzvah* students walk through a meaningful process and rise to the challenge. Our youth have found their voices in choir and theater. Our Philadelphia Museum of Jewish Art has been lifted by her inspiration. Our professional team is more strategic. Every area of communal life has been influenced by her wisdom. Our congregants have been pastorally cared for. Students of *Torah* have deepened their studies. And all of us, in prayer, have opened our voices and our souls as she has led us to spiritual depths and joyful heights. Although there is no replacing her, when we go from strength to strength, we will do so having been changed by her vision.

Cantor Frankel's decision to step aside from her professional role may not be our choosing, but we support her and wish for her a path of fullness, joy, and holiness.

# President: Michael Hauptman



## Sacred Space: A New Definition

When I began my term as president three years ago, I would never have imagined that I would be leaving in the midst of a worldwide pandemic with all of us quarantined in our homes.

But like most disruptive events, we learn new things and we grow from them. And beyond the life-changing experiences that I have had during the first thirty-three months of my presidency, the last three months have perhaps been the most profound for me personally.

I have come to the realization that, as much as architecture can serve to awaken and inspire the human spirit, we are not our building. As magnificent as it is, and as much as it adds to our personal Jewish experience, and as it may have even played a significant role in why many of our congregants joined Rodeph Shalom in the first place, I have learned what we all may have intuitively always known; that we are our people.

We are our members who have been gathering virtually and who have continued to find ways to connect through our computer screens; who crave the opportunity to see each other and participate as a community in online experiences.

We are our clergy and staff who have worked diligently from their homes, continuing to find meaningful ways to provide educational, spiritual, and sacred moments that emphasize the relevance of synagogue life even when we can't be under one roof.

We are our texts and our music and our values that we are able to take with us, as we have for the long history of the Jewish people and as Rodeph Shalom has continually adapted them to be more meaningful to each generation of its members for 225 years.

We will return to our building as a stronger congregation because we continued to be here for each other even in an environment devoid of soaring spaces, dramatic light, and rich materials. I am deeply honored to have been part of the history of such an essential, historic institution. Being president has transformed the way I think about Judaism, people, relationships, and myself. It has provided me with opportunities to work with remarkable, inspiring people, for productive introspection, for personal growth, and for a chance to make a difference. Thank you for that rare privilege.

*L'Shalom,*

A handwritten signature in black ink, appearing to read "Michael Hauptman".



## Annual Congregational Meeting

The [Annual Meeting of Congregants](#) is our opportunity to join together when our new Board of Directors is installed and hear our vision for the path forward in this time of pandemic. This [Zoom meeting](#) takes place on **Wednesday, May 27, 2020 at 7:00pm.**

In addition to the Board of Directors nominations and Board of Directors elections to be presented by Lloyd Brotman, Immediate Past President, there will be an annual report by Michael Hauptman, President, followed by remarks by our incoming President, Hank Bernstein.

Please refer to the information below from Lloyd Brotman, Chair of the Board Development Committee. If you have any questions, please contact [Lloyd Brotman](#).

In accordance with the Congregation Rodeph Shalom Bylaws, the Board Development Committee (BDC) hereby submits a slate of candidates for each officer and director position prior to the election at the RS Annual Meeting scheduled for May 27, 2020.

Consistent with the Bylaws, the BDC is chaired by the immediate past president, and the current president appoints committee members for two year terms. Lloyd Brotman served as BDC Chair. President Michael Hauptman and President-elect Hank Bernstein participated. Committee members included Susan Behr (1<sup>st</sup> yr), Fredric Edelstein (2<sup>nd</sup> yr), Richard Jaffe (2), Brent Landau (1), Gail Meister (1), Rachelle Lee Schneider (2), Ellen Simon (2) and Kait Yulman (1).

### OFFICER NOMINEES

#### Vice Presidents

Deborah Gordon Klehr  
Fran Martin

#### Treasurer

Daniel Seltzer

#### Assistant Treasurer and Secretary

Bonnie Brier

### DIRECTOR NOMINEES (Incumbents to be renominated for second, 1 year term of either a 2 or 4 year maximum)

Jonathan Broder  
Eric Dickstein  
Charles "Chip" Ellis  
Jennifer King  
Jonathan Krause  
Ellen Simon  
Paul Snitzer  
Aaron Weiss

### DIRECTOR NOMINEE (New nominee for first, 1 year term of 4 year eligibility)

Kait Yulman

### OFFICERS who will not stand for election but will assume new positions as per Bylaws

#### President (Year 1 of 3 year term ends May 31, 2023)

Henry Bernstein

#### Immediate Past President (Year 1 of 3 year term ends May 31, 2023)

Michael Hauptman



# Upcoming Events

## New Days of Learning Monday, May 11, through Friday, May 15

Let our best selves shine forth  
In these moments of uncertainty...  
Let kindness flow between us...  
As a river of blessings.

Alden Solovy, "Sheltering In Place"



Zooming to you from May 11 through May 15 are **New** Days of Learning. Throughout the day and evening, join with fellow congregants of all ages, teaching and learning together. Each session lasts forty-five to sixty minutes. Classes are online, rain or shine. See dates and times below. Questions? Contact [Gail 'Malka' Meister](#) or [Ellen Poster](#). To register for **New** Days of Learning online, click [here](#).

### Monday, May 11

**10:00 to 11:00 AM: Torah Study on the Mountain with Rabbi George Stern and Dinah Brin.** As we slowly climb out of the depths of viral servitude, we will examine what the *Torah* portion *Behar* (on the mountain) can tell us about how to make our climb worthwhile. You will surely recognize the most famous phrase from *Behar*, "Proclaim liberty throughout the land..."

**3:00 to 4:00 PM: The Language of LGBTQIA+ with Monica Kramer, Rachelle Schneider, and Heshie Zinman.** Take some time to learn a new language—the pronouns and the acronyms of LGBTQIA+ and more.

**7:00 to 8:00 PM: Suffragists: Our Jews in the News with Julia Williams and Paula Fuchsberg.** Voting has arguably never been more important than now. Sit in with Julia Williams and Paula Fuchsberg of the RS Suffrage Project as they show how they discovered Jewish suffragists in Philadelphia who moved and shook the United States into granting women the right to vote 100 years ago.

### Tuesday, May 12

**10:00 to 10:45 AM: A Joyful Noise Sing-Along with Rabbi Eli Freedman.** Open your mouth joyfully—kids and grandkids, too—to sing Jewish camp songs with Rabbi Freedman, his guitar, and maybe his ukelele.

**1:00 to 2:00 PM: Green and Growing with Marsha Weinraub and Stuart Schmidt.** Step outside with Marsha Weinraub and Stuart Schmidt to learn how to design and maintain an urban garden in Philadelphia. Also learn why flowers and plants are associated with the upcoming major (yet unfamiliar to many) holiday of *Shavuot*.

### Wednesday, May 13

**2:30 to 3:30 PM: A Time to Every Purpose: Ethical Wills\* with Fran Martin.** Discover ways to identify what your most important Jewish values are and how to share them with your loved ones. You may come up with your own ideas on how to share. And you don't have to die to do it.

### Thursday, May 14

**1:00 to 1:45 PM: Sanctuary with Karen Michaels and Michael Hauptman.** Miss being in our sanctuary? Be there virtually. Photographer Karen Michaels will show and discuss her loving images of our sacred space and congregational president and architect Michael Hauptman will offer his commentary.

**5:15 to 6:15 PM: A Time to Every Purpose: Living Wills\* with Brian Gordon and Ellen Kraftsow-Kogan.** To whom should you give a medical power of attorney? What decisions might they make? Why does it matter? What does our faith teach us about death with dignity?

# Upcoming Events

**Friday, May 15**

**9:15 to 10:15 AM: *A Time to Every Purpose: Testamentary Giving\** with Bernice Koplin.** Deciding on the distribution of property after death forces us to confront a tangle of practical and ethical issues. For example, what should be the balance between giving to charity and family? Should children always receive equal amounts and through the same financial arrangements? How can you protect vulnerable relatives after your death?

**1:00 to 1:45 PM: *Counting the Omer with Jerry Silverman.*** Jerry will lead a virtual tour around the omer and its connection to Kabbalah and mysticism. Come along to find out: What exactly is an *omer*? Why, when, and how do we count the days? What are the mystical attributes connected to the seven weeks? Why is it considered a time of semi-mourning? What personal spirituality can you discover during this period? And what is *Lag B'Omer*, and why do Israelis burn wooden trash to celebrate?

\*Together, with the other presenters in the three ***A Time to Every Purpose*** classes, Rabbi Freedman will bring out the essentially Jewish nature of this enterprise.

## Registration Information

To register for **New** Days of Learning online, visit [rodephshalom.org/newdaysoflearning](http://rodephshalom.org/newdaysoflearning).

The classes are free, but there is an optional donation. If you wish to donate to the Casino Building Staff Gift Fund, the COVID-19 Neighborhood Social Justice Fund benefitting Philabundance, or to Days of Learning programming, please mark your choice on the registration form online.

If paying by check, please make it payable to Rodeph Shalom. On the subject line, write the fund(s) to which you'd like your donation applied. Mail to Rodeph Shalom, 615 N. Broad St., Philadelphia, PA 19123.

Monday, May 11	Tuesday, May 12	Wednesday, May 13	Thursday, May 14	Friday, May 15
10:00 to 11:00 AM Torah Study on the Mountain  <i>Rabbi George Stern Dinah Brin</i>	10:00 to 10:45 AM A Joyful Noise Sing-Along  <i>Rabbi Eli Freedman</i>	2:30 to 3:30 PM A Time to Every Purpose: Ethical Wills  <i>Fran Martin Rabbi Eli Freedman</i>	1:00 to 1:45 PM Sanctuary  <i>Michael Hauptman Karen Michaels</i>	9:15 to 10:15 AM A Time to Every Purpose: Testamentary Giving  <i>Bernice Koplin Rabbi Eli Freedman</i>
3:00 to 4:00 PM The Language of LGBTQIA+  <i>Monica Kramer Rachelle Schneider Heshie Zinman</i>	1:00 to 2:00 PM Green and Growing  <i>Stuart Schmidt Marsha Weinraub</i>		5:15 to 6:15 PM A Time to Every Purpose: Living Wills  <i>Brian Gordon Ellen Kraftsow-Kogan Rabbi Eli Freedman</i>	1:00 to 1:45 PM Counting the <i>Omer</i>  <i>Jerry Silverman</i>
7:00 to 8:00 PM Suffragists: Our Jews in the News  <i>Paula Fuchsberg Julia Williams</i>				



## Reimagining the Coming Months Together in Our Virtual Rodeph Shalom

The change we are experiencing is breathtaking.

A congregant and healthcare expert identified an intriguing thought to inform our planning. “As we look back at today, the question will be ‘what did Rodeph Shalom do to be a leader?’”

Since our first COVID-19 pandemic communication on March 11, we acknowledged the evolving situation and said, “The Rodeph Shalom community will do its part in the mitigation of this virus.” We have adapted to a new normal, and today we are a virtual congregation, recognizing our responsibility to continue to do our part to manage the virus spread through physical distancing practices.

Congregants have joined for Zoom *Shabbat* services and *Torah* Study, Weekly Congregation Check-Ins, virtual Berkman Mercaz Limud (religious school), offerings for Families with Young Children, adult education courses, and even a Second Night *Seder*. Our largest virtual gathering to date was on May 1, when close to 300 unique electronic devices representing about 500 attendees joined us for a *Shabbat* service to honor our beloved Cantor Frankel. In May, we anticipate great participation in the upcoming May 11-May 15 virtual New Days of Learning.

This truly is a congregation where profound connections are created—even virtual ones. As Rabbi Maderer has said, “Though we are not together in person, we embrace the concept of *ain*

*sof*- beyond boundary.”

Sadly, some interactions have been interrupted. *B’nai Mitzvah* are postponed and among the most difficult changes are those related to the loss of a loved one. A congregant remarked, “It’s hugely frustrating not to be able to go to the synagogue at a time when the comfort of its space and its people are needed the most.”

As we continue to reimagine the coming months, we balance the wish for normalcy with the guidance of healthcare professionals. We recognize that, in our region, we are nowhere near the standard of declining case rates being in place for at least two weeks, one of the required markers.

At the right time, creating a safe environment will be essential. Being at the front of the opening process, however, is not consistent with our goal to be a leader. Leadership demands vigilance and a focus on what matters. Through this lens, even if there may be physical distancing exceptions for religious organizations, it is not our intention to find these allowances.

Before we get to that moment, we are striving to determine how we can, as a faith community, help one each other and Philadelphia. If you have thoughts on this topic, please reach out to [Alicia Broudy](#) or [Fran Martin](#) for congregant support and to [Rabbi Freedman](#) for community support.

L'Shalom,

## Welcome Serena Shapero, Director of Philanthropy

In March, just as our building was closing due to COVID-19, we virtually welcomed Serena Shapero. Serena is responsible for organizing, leading, and supporting our ongoing philanthropic efforts. Prior to joining RS, Serena was responsible for development and volunteer engagement at Girls on the Run of Central Maryland. Previously, she was the Assistant Director of Young Leadership and Digital Engagement for the Anti-Defamation League (ADL) in Philadelphia.

Some of you have gotten to know Serena through phone calls, as she has participated in outreach to check in on congregants.

We look forward to the time when you meet Serena in person, and, in the interim, you can reach her at [sshapero@rodephshalom.org](mailto:sshapero@rodephshalom.org).





## Virtual Berkman Mercaz Limud & Activities for Rodeph Shalom Youth

**N**ot even shelter-in-place

during a historic pandemic can stop Jewish learning and friendship for the youth of Rodeph Shalom! For the past two months, hundreds of our children and teens have continued to share both.

Starting with the premise that our mission during this time is to provide Jewish connection, continuity, and content, we created a Virtual Berkman Mercaz Limud experience for every grade, from Pre-K through 12<sup>th</sup>. Sunday mornings have remained a time for these students to come together with each other and their teachers, albeit through the medium of Zoom classrooms rather than physical ones. The enjoyment they feel at being able to connect with one another still is palpable, and the learning of *Torah*, Hebrew, history, Israel, life cycle,

and the holidays of *Pesach* and *Yom Ha'atzmaut* have been the vehicles for them to talk, laugh, question, and cooperate together. Midweek Hebrew also continued in an online format, with additional sessions focusing on Hebrew learning as well as catching up with each other every Wednesday. And on other weekday afternoons, youth programming (which we call RSTY Online) has kept our children from 1<sup>st</sup> through 7<sup>th</sup> grades busy and entertained as well. Just a sampling of those sessions includes a meeting with a professional sportscaster, learning how to do improv, creating unique crafts and recipes, comparing favorite superheroes, and playing interactive theater arts games.

As challenging as it has been to create such robust online learning and social programs, our efforts have been rewarded many times over by the enthusiasm and participation of so many children and families week after week. We look forward to a time when we will all be together

again, in body as well as spirit!

Finally, an important announcement: Stacie Graff, our Youth Engagement Coordinator, has been a vital part of the success we have enjoyed building community among Rodeph Shalom children, teens, and families over the past two years. It is therefore with much sadness that we now say goodbye to Stacie, who has decided to leave her work in Jewish communal life for the time being to help with her family's business. Fortunately, Stacie plans to return to our teaching staff and continue her excellent work in Berkman Mercaz Limud with 7<sup>th</sup> graders. We wish her well in her new venture and, at the same time, look forward to her continued work with our preteens on Sunday mornings.

I hope you all are staying well and healthy.

L'Shalom,



## Virtual Highlights of Families with Young Children & Buerger Early Learning Center

**B**uerger Early Learning Center and Families with Young Children shared virtual events so that we could continue to make profound connections. Although being together is ideal in connecting with our community of friends, the virtual world at this time is another alternative. We were able to continue with *Shabbat Sing* on Fridays at 10:30am and the monthly *Tot Shabbat* at 9:30am. Other events that were hosted

include story time, Passover craft with story time, Model *Seder*, and *Havdalah*. We will continue to bring you events and sharing time together. As a community, we are always better together even in a virtual format. Stay well and safe!

L'Shalom,

# The RS Suffrage Project

## Meet Jennie Dornblum, an ardent suffragist (and much more) with ties to RS

By Paula Fuchsberg, RS Suffrage Project Member

When third-generation RS member Liz Shapiro spotted a *Bulletin* query seeking family stories from the suffrage era, she offered up a gem: the colorful tale of her great aunt Jennie Rantz Dornblum, whose advocacy on behalf of the women's vote heralded decades of social activism.

Jennie, a lifelong Philadelphian who lived to 102, was a "renegade and a bit of a rebel," says Liz, who remembers her as warm and kind. In the years before the 1920 adoption of the 19<sup>th</sup> Amendment, a young Jennie championed suffrage through writings and on the city's streets, exhorting crowds alongside the likes of Alice Paul, one of the movement's key leaders. Family lore has it that during this period, Jennie even spent a night or more in jail.

Her efforts won praise in a 1955 memoir titled *Lifting the Curtain: The State and National Woman Suffrage Campaigns in Pennsylvania as I Saw Them*, by Caroline Katzenstein, a Philadelphia-based Jewish suffragist leader. Katzenstein wrote of an outdoor rally at 40<sup>th</sup> and Lancaster at which the first speech was given by "Jennie Rantz, a self-supporting young girl, who was not only an ardent Suffragist but an able and very intelligent speaker upon whom we could depend for help in the years ahead of us."

Four years after women won the vote, the by-then married Jennie ran for Congress on the LaFollette/Socialist ticket in Philadelphia's Third District—one of five female Pennsylvania congressional candidates who were backed by the National Woman's Party. The male incumbent won easily, but

Jennie still drew 3,300 votes, or seven percent of the total.

Later, she was a tireless proponent of world federalism, among other causes; took over her husband Isaac's Prudential Insurance business after his eyesight failed; helped co-found (along with Isaac) the Workmen's Circle Home in Media; worked there full time as an executive secretary until age ninety-six; and, her grandson, Frank Aguilera says, was "unbeatable at Scrabble until the very end." Clearly, a modest article such as this one can capture only a few highlights of such an eventful life.

Jennie, who died in 1991, typed a sixty-page memoir at an advanced age. Liz retrieved a copy a few years ago while cleaning out her mother's home and recently read it in full for the first time. This passage offers a glimpse of Jennie's activist mindset: "In my teens, I was a Suffragist, working for women's rights. Speaking on street corners, before the days of radio and TV, when one went out into the streets to talk to people, distribute literature—spread the gospel. I was a zealot, sure that I knew how to save the world. And anything less than complete devotion to the Cause was sinful."

Marriage and motherhood only strengthened Jennie's resolve. She said in a 1924 campaign brochure: "I feel more keenly the responsibility of a citizen.... I must help to make a better world for my children and all the world's children."

So what drove Jennie's activism? The first U.S.-born child in a family of Russian Jewish immigrants (an older sister, Elizabeth, was Liz's paternal grandmother), Jennie lost her father before she was six.

To support the family, mother Frieda took in dressmaking work.

"We grew up with the daily sight of our mother sitting at the sewing machine until

her head fell forward on the machine—faint or asleep," Jennie wrote. "My mother worked day and night in her desperate efforts to keep the family together and send her children to school.... With such antecedents I grew up keenly appreciative of the public school and of freedom."

Before long, Jennie—the "brave and strong" one in the family—helped earn money, selling newspapers under the El and interrupting her high school education to work in a type foundry. She later studied stenography at night, which equipped her with a trade; took courses at Drexel, Temple and Penn; and read and attended lectures to try to understand issues affecting working-class people.

Jennie met Isaac, then a labor organizer, when she worked for the shirtwaist makers' union. They concluded "that the problems of the working class are the most pressing," she wrote. "I also felt very keenly that the special handicap under which women suffered should be removed without delay."

In later decades, the home the



A young Jennie (top left) and siblings (clockwise) Elizabeth, Rose, and Louis flank mother Frieda. [Photo courtesy of Liz Shapiro]

RS Suffrage Project continued on [page 13](#)

Rabbi Maderer continued from [page 3](#)

standards. This will not make our mission easy, but I believe in this congregation and I have faith in our capacity to remain resilient, nimble, and connected even through our greatest challenges.

The crisis demands incredible adaptation for our professional team, and I am grateful for the work of our Executive Director, Jeff Katz, and the entire team, who have reinvented the ways we do everything from communications to services to caring community to paying our bills. I am not surprised to see excellence come from our staff; the way each of them has been highly productive, creative, and committed even while facing the challenges and limits of remote work makes us very lucky to have them. Our Director of Youth Education, Jennifer James, has reinvented our Berkman Mercas Limud program for an engaging online experience. Our clergy have completely reimagined the ways we all connect; through every gathering and every pastoral encounter and every organizational system the clergy has reinterpreted the *Torah* for this moment. And we have not

been alone.

Rodeph Shalom's lay leaders, especially our president Michael Hauptman and president-elect Hank Bernstein, have been in deep partnership with me from the very beginning of the crisis. Together we have determined principles and implementation, at first for initial distancing decisions and now for ongoing service, program, staff, and budget scenario-planning for the congregation. Ongoing management of the crisis with caution as we watch our feet—this is our every day.

And yet, our focus cannot only be in crisis management. Even as we watch our feet, we shall pack our timbrels and prepare for a future of fullness. Much like *Torah*, we live multiple truths at once. And so, even in this very moment, we also live in the aspirational.

If we need to live through this experience, we had better learn from it. There is no going back. In partnership with our leadership, I am asking the questions: What are we learning for tomorrow?

How is this disruption sharpening our intentionality and clarifying our priorities? How is it teaching us the most effective, updated methods for the ways we accomplish our vision—everything from technology to organizational systems? How is this time demonstrating what is most important to our congregants? How can global crisis help us rediscover our role as a justice leader?

As we ask and bring new insights to these questions and many more, we will begin to create the path forward. Rooted in our past, relevant in our present, and committed to our future, I look forward to our forging the next steps in this path forward together. Even as we watch our feet, so too, we shall pack our timbrels.

Immersed in Jewish time, guided by enduring values, compelled to moral action, we create profound connections. It is true, now more than ever.

L'Shalom,

*Gill Z. Maderer*

RS Suffrage Project continued from [page 12](#)

Dornblums built in Robin Hill, near Media, became a gathering spot for community and causes. The Jewish intelligentsia of Philadelphia often visited. And news briefs in the *Delaware County Daily Times* and *Chester Times* in the late 1940s through early 1960s noted Jennie's active roles in, and/or her hosting of speakers from, organizations such as the League of Women Voters, the United World Federalists, the American Friends Service Committee, and the Women's International League for Peace and Freedom.

Well into old age, family members recall, Jennie remained politically aware,

opinionated, and unflaggingly positive.

For Liz, reimmersing herself in her great aunt's story has been "so fascinating to me," and she wishes she had "talked to Jennie a bit more." Thanks to this project, Liz has connected with relatives she'd never met and started working with a cousin on a family tree.

And she sees one more ongoing link to Jennie—a trait that has carried through the generations, for Liz notes: "I certainly have the activism in me, that fire of righteousness."



This photo of Jennie promoted her 1924 candidacy for Congress. It is stamped "Property of National Woman's Party."

Paula Fuchsberg and Julia Williams, members of The RS Suffrage Project, are discussing "Suffragists: Our Jews in the News" during the New Days of Learning on Monday, May 11 at 7:00pm. See [page 8](#) for more information on registration.

# The RS Family

## Mazel Tov

**Bonnie Asher** on the birth of her grandson, Rami Rham Isaac Doar

**Ezra Baraban & Elizabeth Galbrecht** on their marriage

**Jay & Donna Barnett** on the birth of their grandson, Owen Nicholas Barnett

**Alex Botwick & Andrea Lubitz** on the birth of their daughter, Ariella Eve Lubitz Botwick

**Rachel Broder & Frank Mangiaracina** and **Jonathan Broder & Joy Bernstein** on the birth of their daughter and granddaughter, Ella Elide Mangiaracina

**Michael Coleman & Ellen Singer Coleman** on the birth of their granddaughter, Poppy James Frank

**Stephen Crane & Elaine Jaskol** on their marriage

**Eric & Lauren Dickstein** on the birth of their daughter, Lola Hayes Dickstein

**Angel Luis Franqui & Deborah Solo** on the birth of their granddaughter, Miriam Rebecca Nichols Franqui

**Robert & Susan Hopfan** on the birth of their grandson, Chase Matthew Zerega

**Andi Miller** on the birth of her grandson, Jack Samuel Herman

**Daniel & Jennifer Rovner** on the birth of their daughter, Ava Brooke Rovner

**Eric, Dana, and Maya Strauss** on the birth of their daughter and sister, Lily

**Fred Strober & Beth Ann Robinson** on the birth of their granddaughter, Sidney Salo Strober

## Perpetual Memorials

**Melva Judith Herrin**, mother of Dena Herrin (Alfredo Mauri); grandmother of Amanda Mauri and Dan Mauri

**Frederick Robinson**, father of Cary (Suzanne) Robinson and Danielle Robinson

Contact Candice Nemoff  
([cnemoff@rodephshalom.org](mailto:cnemoff@rodephshalom.org))  
or 267-930-7293 to establish  
a Perpetual Memorial.

## In Memoriam

- **Jeffrey Bodack**, in-law of Denise Finer
- **Eugene Block**, husband of Cecillie Block
- **Edith Bonin**, aunt of Adam Bonin (Lisa Tucker)
- **Terry Brandt**, loved one of Liane Friedberg
- **Joel Cohen**, brother of Bonita Cohen
- **Phyllis Elman**, mother of Erin Elman (Stephen Gibson); grandmother of Izzy
- **Allan Finer**, husband of Denise Finer
- **Elinor Garson**, mother of Janis Burr (Jerry Dicht); grandmother of Andy Burr (Stacie Evans)
- **David Ray Glover**, grandfather of Jenni Russell
- **Elaine Axilbund Goldstein**, mother of Cindy (Larry) Rappoport
- **Pista Hartocollis**, mother of Lina Hartocollis (Larry Ceisler)
- **Melva Judith Herrin**, mother of Dena Herrin (Alfredo Mauri); grandmother of Amanda and Dan
- **Sheldon Jekofsky**, husband of Carol Jekofsky
- **William Kirshenbaum**, father of Andrea Kirshenbaum (Joshua Goldberg); grandfather of Ben
- **Leonard Kleeman**, father of Andrew Kleeman (Holly Lentz Kleeman); grandfather of Hannah & Jakob
- **Robert "Bobby" Alan Marlowe**, father of Beth Marlowe
- **Marshall Mitzman**, great-uncle of Candice Nemoff
- **Maxine Nasser**, mother of Dan Nasser (Caren Cohen); grandmother of Sloane and Jay
- **Mark Newberger**, son of Gloria Newberger
- **Laurie Levin Pezzner**, mother of Rachel (Jeremy) Israelite; grandmother of Mia, Morgan, and Jackson
- **Suzanne Fleisher Roberts**, mother of Lisa (David) Seltzer
- **Charlotte Shapiro**, mother of Liz Shapiro
- **Sally Shorr**, mother of Saul (Peggy) Shorr
- **Luis Silva**, cousin of Candice Nemoff
- **Donna Silverman**, wife of Gary Silverman
- **Stanley Solo**, father of Deborah Solo (Angel Luis Franqui)
- **Leon Sunstein, Jr.**, father of Paul Sunstein, Kay Hymowitz, and Lauren Sunstein
- **Mary Whitehouse**, mother of Bob (Chris) Whitehouse; grandmother of Evan, Bobby, and Ainsley

## COVID-19: Helping Our Friends and Neighbors

*At the beginning of the pandemic when its impact became apparent, RS members identified two specific areas of philanthropic focus.*

*To address these interests, [two philanthropic options](#) were established. To support Philadelphians experiencing food insecurity, the COVID-19 Neighborhood Social Justice Fund was established. All donations go to Philabundance in the name of Rodeph Shalom.*

*To help our building services staff and families, we created the Casino Building Staff Gift Fund. Our past president, Tom Perloff, is helping us with the management of the gifts directed to the Casino Building Staff employees. With appreciation to Tom for his dedication, here is his overview of this initiative:*

For the last fifteen years, the Congregation has contracted with Casino Cleaners for housekeeping services. Members of the Casino team – Elwood, Jeanette, Tally, Francisco, Gloria, Bebe, Zach, Peggy, and Gene – have become part of our congregational family.

With a smile, their tireless work behind the scenes facilitates the High Holy Days, life cycle events, our Berkman Mercas Limud (religious school), the Buerger Early Learning Center, and innumerable meetings. Casino staff has jumped in to do the little things that let our building run effectively and efficiently. As a bonus, they are always watchful of our security and mindful of the special needs of our members. With the closing of our building, housekeeping work hours have been

eliminated. Although employees of Casino are eligible for unemployment compensation and governmental support, these programs are limited. Thus, we have created the Casino Cleaners Support Fund to thank the Casino team for their hard work and commitment to our community. The fund will distribute Mastercard gift cards to help fill in the gaps.

Especially as the self-quarantine period is ongoing, contributions to the Fund continue to be greatly appreciated.



### CASINO BUILDING STAFF GIFT FUND

Jay & Donna Barnett  
Daniel & Susan Behrend  
David Behrend &  
Dona Horowitz-Behrend  
Richard Berkman & Toni Seidl  
Henry B. Bernstein  
Richard & Kay Braun  
Jonathan Broder & Joy Bernstein  
Lloyd & Merrill Brotman  
James & Renee Carl  
Cheryl K. Dougherty  
Larry Dubinski & Vicki Markovitz  
Denise Finer  
David Fischer & Heshie Zinman  
Cantor Erin & David Frankel  
Ben-Zion & Jane Friedman  
Susan J. Gross  
Ned Hanover  
Michael Hauptman & Erika Flory

Dena Herrin & Alfredo Mauri  
Tomas & Patricia Isakowitz  
Howard & Jane Jacobs  
Annabelle Jellinek  
Andrew Kleeman &  
Holly Lentz Kleeman  
Deborah, Paul, Michelle &  
Carolyn Kelly  
Leonard & Susan Klehr  
Muriel Kudera  
Rabbi William & Emily Kuhn  
Stan & Beth Lashner  
Joan A. Levin  
David Mandell & Jamie Kudera  
Rabbi Jill Maderer & Len Lipkin  
Fran Martin  
J.W. Gregg & Gail Meister  
Michael & Lauri Mufson  
Geoffrey Neimark & Kait Yulman

Tom & Carol Perloff  
Ralph & Cheryl Pinkus  
Michael & Kate Riccardi  
Gail Rosenberg  
Bruce Rosenfeld & Bonnie Brier  
Adelle Rubin  
Leonard & Alice Sayles  
Carl & Mary Ellen Schneider  
Daniel & Kate Seltzer  
Jerry Silverman  
Richard Alan Simon  
Robert & Janeane Sloane  
Paul & Melanie Snitzer  
Fred Strober & Beth Robinson  
Alan & Lois Urkowitz  
Bettyruth Walter  
Marsha Weinraub &  
Stuart Schmidt

### COVID-19 NEIGHBORHOOD SOCIAL JUSTICE FUND

Roger Bank  
Mitchell & Ferne Cohen  
Marilyn Cohen  
Donnie & Joanne Davidow  
Gail Goldman

Peter & Alexa Grollman  
Jules Henshell & Steven Mostert  
Deborah, Paul, Michelle &  
Carolyn Kelly  
Rabbi Jill Maderer & Len Lipkin

Leonard & Alice Sayles  
Richard Alan Simon  
David Wishnick & Julia Pudlin

*Contributions processed after April 24 will be listed in the June Bulletin. If you are interested in making a donation to these funds, click [here](#).*

## Contributions

### MEMORIALS

#### IN MEMORY OF

**Bernard M. Alterman**

Janet R. Levey

**Allen Auerbach**

Terry Masei-Auerbach

**Dora R. Barnett**

Jay & Donna Barnett

**Donald Bean**

Ellen & Mark Kogan

**Esther F. Berg**

Connie & Donald Berg

**Albert Braunstein**

Ellen & Mark Kogan

**Rose P. Brusser**

Racine Cutler

**Elaine Chadrow**

Stacy Wyn Sarno &

**Doris Chudnoff**

Richard & Kay Braun

**Melvin Cooper**

Susan Cooper &

Martin Shulewitz

**Ethel Shamansky Dragics**

Sherry Shamansky

**Louis Emmer**

Aliza Benjamin

**Sam Feige**

Paul & Trudy Gutterman

**Jack Felzer**

Cynthia Leitzell

**Allan Finer**

Tom & Carol Perloff

Herbert & Barbara Gorenstein

Bobbe & Dick Schmeltzer

Stevie Newman

Mickey & Ellen Simon

Bernard Faigenbaum

Marsha & Jonathan Wheeler

Michael Hauptman & Erika Flory

**Herbert Fischman**

Arthur Fischman & Janet Margolies

**Joe Fisher**

Donald & Connie Berg

**Miriam Flitter**

Peter & Alexa Grollman

**Simon L. Garfinkel**

Donald & Connie Berg

**Robert Ira Goldy**

Jane Paalborg Drucker

**Roselyn Goldman**

Paul & Anita Gross

**Benjamin A. Gross**

Paul & Anita Gross

**Alyce Greenfield**

Rosalie Matzkin

**Harry W. Hauptman**

Michael Hauptman & Erika Flory

**Helen Hauptman**

Michael Hauptman & Erika Flory

**Melva Herrin**

Sherry Shamansky

Michael Hauptman & Erika Flory

**Sheldon Jekofsky**

Bunny Weiss Schoeneck

Albert & Diane Drobnes

George C. Herrmann

Susan & Jerry Rosenfeld & family

Carol & Jeffrey Roth

Rochelle & Nelson Wolf

Barbara Yudkovitz

**Elizabeth Kessler**

Steven Mostert & Jules Henshell

**Leonard Kleeman**

Michael Hess & Marty Miller

Marsha & Jonathan Wheeler

Michael Hauptman & Erika Flory

**Charles Robert Kline**

Susan & Leonard Klehr

Adelle Kine

**Valli Korin**

Dulcie Pomerantz Romm

**Albert Kraftsow**

Ellen & Mark Kogan

**Geraldine "Jerry" Lazarus**

David Behrend &

Dona Horowitz-Behrend

**Carman Levin**

Marc & Nancy Shrier

**Carol Lowenstein**

Marc Lowenstein & Debbie Davies

**Hazel Lyman**

Paul & Trudy Gutterman

**Lucy M. Mostert**

Steven Mostert & Jules Henshell

**Hilde Pinkus**

Ralph & Cheryl Pinkus

**Audrey Reant**

Stevie Newman

**I. Budd Rockower**

William & Joan Greenfield

**Samuel Root**

Lee & Patsy Herman

Kay & Richard Braun

Sidney New

Michael Hess & Marty Miller

**Eugene Rush**

Herman Rush

**Leon J. Shander**

Arlene Toby Meyer

**Albert Sharp**

Susan Cooper & Martin Shulewitz

**Karen Silverman**

Gary Silverman

**Norma Silverman**

Roslyn Hahn

**Lillian Spain**

Ned & Frances Levi

**Philip Spear**

Grossman & Haber families

**Nina Spinelli**

Michael & Shelley DeLaurentis

**Fred (Fritz) Strauss**

Jeffrey & Stephanie Strauss

**Charles Gerstley Sunstein**

Ted & Florence Begun

**Leon C. Sunstein, Jr.**

Ted & Florence Begun

**Bertha B. Tamarin**

Susan Baron

**Jules Zev Warren**

Lois Kyler

**Allen P. Wechsler**

Robert Wechsler

**Andrei "Bandi" Weisz**

Philippe Weisz & Stephanie Fish

**Amy Wolgin Wiener**

Norman Wolgin

**Leanne Romm Wingert**

Dulcie Pomerantz Romm

**Elayne Stein Wolf**

Susan & Ronald Trichon

**Edith Zackheim**

Ann Frumkin

**BERKMAN MERCAZ LIMUD**

**FUND**

**IN MEMORY OF**

**Melva Herrin**

Reid Bodek

**CARING COMMUNITY FUND**

**Betty Rosenfeld and**

**Edith Urkowitz**

Lois & Alan Urkowitz

**CASINO BUILDING**

**STAFF GIFT FUND**

**IN HONOR OF**

**Hank Bernstein**

Rabbi Jill Maderer &

Len Lipkin

**Cantor Erin Frankel**

Denise Finer

**IN MEMORY OF**

**Melva Herrin**

Paul & Melanie Snitzer

**CLERGY PHILANTHROPIC**

**FUNDS**

**IN HONOR OF**

**Rabbi Freedman's**

**Honoring of Samuel Root**

**at his Celebration of Life**

**ceremony**

Joel & Donna Root

**IN MEMORY OF**

**Melva Herrin**

Lauri & Michael Mufson

**COMMUNITY ENGAGEMENT**

**INNOVATION FUND**

**IN MEMORY OF**

**Phyllis Elman**

Erin Elman &

Stephen Gibson

**COVID-19 NEIGHBORHOOD**

**SOCIAL JUSTICE FUND**

**(benefits Philabundance)**

**IN MEMORY OF**

**Harriett Engel**

Ferne & Mitchell Cohen

**I.J. Grollman**

Peter & Alexa Grollman

**Col. David Henshell**

Jules Henshell &

Steven Mostert

**Lo Michlowitz**

Ferne & Mitchell Cohen

**Michael Nevens**

Roger Bank

**Wolf Shoag**

Ralph & Cheryl Pinkus

**EDUCATION**

**ENDOWMENT FUND**

**IN HONOR OF**

**The birth of Ella Elide**

**Mangiaracina**

Henry B. Bernstein

Michael Hauptman & Erika Flory

**The birth of Owen Nicholas**

**Barnett**

Henry B. Bernstein

Michael Hauptman &

Erika Flory

**The birth of Lola Hayes**

**Dickstein**

Henry B. Bernstein

Michael Hauptman &

Erika Flory

**IN MEMORY OF**

**Allan Finer**

Henry B. Bernstein

Cheryl Dougherty

Mindelle Goldstein

**Melva Herrin**

Henry B. Bernstein

**Leonard Kleeman**

Henry B. Bernstein

**HUNGER RESPONSE**

**FUND**

**IN MEMORY OF**

**Lynn Magid**

Mitchell & Ferne Cohen

**Samuel Root**

Louis &

Mary Ellen Bernstein

**LEE STANLEY**

**MUSIC FUND**

**IN MEMORY OF**

**Allan Finer**

Ben-Zion &

Jane Friedman

**PHILADELPHIA**

**MUSEUM OF JEWISH**

**ART FUND**

**IN HONOR OF**

**The 40<sup>th</sup> Anniversary of**

**Rick & Roz Jay**

Michael Hauptman &

Erika Flory

**SYNAGOGUE FUND**

**IN HONOR OF**

**Rabbi Eli Freedman**

Lee & Patsy Herman

Paul & Natalie Cohn

**The 97<sup>th</sup> birthday of**

**Morris Lift**

Lee & Patsy Herman

**Amani Piers's Post-PhD**

**Internship Match at**

**University of California**

**San Diego**

Lee & Patsy Herman

**A speedy recovery to**

**Phyllis Friedenberg**

Lee & Patsy Herman

**IN MEMORY OF**

**Richard Yusem**

Lee & Patsy Herman

**Phyllis Yusem**

Lee & Patsy Herman

*Contributions  
processed after  
April 24 will be  
listed in the  
June Bulletin.*

# Perpetual Memorials

## May 3 to May 9 (9 Iyar to 15 Iyar)

Mitzi Adis  
Fritzie R. Bauer  
Martin Bayersdorfer  
Florence Kaufmann Bergsmann  
Isidor Binswanger  
Harry Braunstein  
Frances Lave Broder  
Lewis Cohen  
Milton M. Ettelson  
Marjorie Jane Flock  
Albert Fogel  
Charles Edwin Fox  
Max Friedman  
Joseph J. Gabel  
Ignatius O. Gardner  
Sadye Lande Garfinkle  
Abraham Glant  
B. Franklin Glass  
David Goldstein  
Sol W. Goodman  
Ray Pimes Greenberg  
Samuel G. Gross  
Charlotte R. Holt  
Israel Isaac Jamison  
Harry C. Kahn, II  
Caroline Allman Kayser  
Clothilde Kohn  
Albert Kraftsow  
Benson Krieger  
Jacob Krieger  
Jack H. Landau  
Freda Goldich Leof  
William W. Levinson  
Florence Levy  
Arthur S. Lorch  
Jennie Lipman Luria  
Milton M. Meyers  
Ida E. Needle  
Katherine Ginsburg Nelson  
Celia Freedman Newman  
Rose Hassler Pinkus  
Bernard Polikoff  
Louise Gerstley Pols  
Laurie Schwarz Reinheimer  
Fred M. Rodin  
Harvey Rosenbluth  
Sarah Strauss Rosenfeld  
Jacoby Theodore Rothner  
David Robert Sacks  
Therese Borns Salus  
George E. Schweig  
Rebecca Feinberg Sellers  
David P. Shulman  
Miriam S. Strumpf  
Gustav C. Tassman  
Joseph Tollin  
Amelia Sandberg Whitehall  
Henrietta Wolf

## May 10 to May 16 (16 Iyar to 22 Iyar)

Sara R. Beneman  
Pauline Bloom  
Nancy S. Brown  
Sidney B. Brown  
Eric Ivan Cohen  
Charles Cohn  
Rose Aronoff Feldman  
Milton A. Feldman  
Rose Kramer Finkelman  
Robin Fleisig  
Rosa E. Gerstley  
Henry E. Glass

N. Edward Goldstein  
William Oscar Gordon  
Etta Strousse Heisler  
Harry Hirschman  
Ida B. Hoffman  
Bertha Jastrow  
Maurice Feinberg Joslow  
Ruth Blum Kapnek  
Theodore H. Kapnek, Jr.  
Philip Kohn  
Marcia G. Lipschutz  
Benjamin S. Loewenstein  
Louis Margolis  
Olga Margolis  
Marion J. Lorch Mayer  
Helena Baum Mayer  
Solomon Miller  
Helene Schaul Newman  
Robert Lee Oppenheimer  
David H. Pleet  
Benjamin Plotnick  
Lester S. Rod  
Harriet R. Rosenbluth  
Lois Gorson Salesky  
Ted Schlanger  
Birdie Meyers Schwerin  
Sara Seefeld  
Emil Selig  
Alfred M. Sellers  
Abraham L. Shapiro  
Sophia Shorr  
Morris Silberman  
Bambi Singer Silver  
Esther R. Solms  
Lester G. Steppacher, Jr.  
Morris Stern  
Maurice B. Strauss  
A. Richard Tannenbaum  
Sol Tutelman  
Harry Frank Weil  
Margaret Koch Weiss  
Henry M. Wise  
David Wise  
Stanley A. Wise, Sr.  
Joseph Woldow  
Morris Wolff  
Shirley Oken Zinman

## May 17 to May 23 (23 Iyar to 29 Iyar)

Florence Auspitz  
Morton E. Baker  
Herman Balen  
Jennie Levy Ball  
Mary Berman  
Jeffrey C. Blank  
M. Brinkman  
Isadore Diz Cohen  
Reuben E. Cohen  
Florence "Floss" E. Feder  
Barbara Fels  
Rae Segal Flickstein  
Simon Frank  
Lionel Friedmann  
Jennie Gerschel  
Rita B. Gerstley  
Henrietta Gerstley  
Julius Goldschild  
Herbert H. Gorson  
Gertrude Z. Gubernick  
Beatrice Hirschfeld  
Alexander Hoffman  
Diana Hollander Speier  
Rosalie L. Hope  
Bertram Jacobs

Cornelia Kahn  
Harold Kiviat  
Irving G. Klaus  
Marjorie E. Largman  
Julius P. Leof  
Florence K. Liveright  
Louis Magaziner  
Frank Morris  
Amanda Leigh Moses  
Henry H. Netter  
Jette Oberdorfer  
Fannie Bloom Pollack  
Rose Leopold Prell  
Annette Spear Price  
Charlotine Abrams Reinheimer  
Philip Emanuel Rosenberg  
George L. Rosenbloom  
Maxine Friedmann Rosewater  
Leah Margolis Rothner  
Ida Rose Sacks  
Lyle David Serfer  
Gertrude Lattash Shorr  
Hilda Silverstein  
Hyman Soltroff  
Adele Strauss Stein  
Louis Stern  
Morris Strousse  
Joseph H. Sundheim  
Carolyn Ruth Netter Sunstein  
Hilda Soll Tahl  
Harry H. Wexelblatt  
Jane Lavin Weyl  
Irene B. Wise

## May 24 to May 30 (1 Sivan to 7 Sivan)

Eugene S. Anathan  
Laura S. Axelrod  
George Bamberger  
Daisy Anathan Bayersdorfer  
Hana Kauffman Baylinson  
Rhoda Bobrow Biberman  
I. Jerome Broder  
Howard Davidson  
S. Mayer Feldenheimer  
Judge Leopold C. Glass  
George B. Goldman  
Elliot J. Goldman, Jr.  
Estelle Marks Goldstein  
Lea F. Goulson  
Samuel Greeh  
Esther Manko Gross  
Bertha Isaac Henly  
Joseph Jacobs  
Nathan Kaplan  
Alfred D. Katz  
Mollie Kins  
Henry I. Koplin  
Marcia G. Lipschutz  
Leah Silberman Manko  
Leon I. Mesirov  
I. Paul Morris  
Gussie K. Myers  
Bertha Oppenheimer  
Joseph Oppenheimer  
Ida Perkins  
Gertrude Plotnick  
Florence L. Pollack  
David Promir  
Abraham M. Rechtman  
Leon D. Reinheimer  
Nan Fisher Robb  
Aaron Dodd Rosen  
Morris Ruberg  
Abraham Sablosky

Morton J. Sablosky  
Otto T. Salzer  
Grace B. Samuels  
Gustav Sattler  
Abe Schlesinger  
Hyman Schubert  
Isaac Schuman  
Rose Waldner Segal  
Gertrude Selig Sternberger  
Hannah Bacharach Strousse  
Blanche L. Sundheim  
Gustav Thalheimer  
Louise Dortort Watnik  
Samuel Pat Weiss

## May 31 to June 6 (8 Sivan to 14 Sivan)

Leon Bien  
Stephen A. Bien  
Elizabeth Bacharach Binswanger  
Lucille Bachman Bloom  
Nathan E. Burgauer  
Caroline T. Cetti  
Reba Keyser Cohn  
Myer Feinstein  
Joseph Fink  
Benjamin Frankel  
Jeanette Ullman Fridenberg  
Solomon Fridenberg  
Michael Goldbaum  
Pearl Marquiz Grass  
Albert J. Hahn  
Bernard A. Haimovitz  
Samuel Hartz  
Sybil Alkus Herz  
H. Irma Hirshberg  
Louis R. Horn  
Joseph A. Iasello  
Alfred B. Kastor  
Harriet G. Kilisky  
Rae W. Klein  
Lois Leidich Tolson  
Erma G. Leopold  
Joseph B. Liebman  
Mollie Lipkin  
Emma Gerstley Loeb  
Robert C. Lupin  
Helena Mandel  
Alfred Mann  
Nora Rodman Marymor  
Martin Meyerson  
Henry M. Obermayer  
Graciela Padilla de Mauri  
Martin S. Robinson  
Rebecca Rosenbaum  
Molly Wallerstein Rosewater  
Beatrice Hendler Sacks  
Bessie Freed Schwartz  
Emma Selig  
Jeanne Ettelson Shapiro  
Bernice B. Simon  
Joseph Snitzer  
Abraham O. Stait  
Morton L. Stern  
Mathilde Sternberg  
Samuel Stoller  
Samuel G. Switzky  
Amelia H. Teller  
Aaron Traub  
Stella Kornfeld Weber  
Shirley Goodman Weiss  
Herbert Wile, Sr.  
Jacob Wilson  
Abraham Wolf

# Who is welcome here at Rodeph Shalom?

- ♦ If you are 3 days old, 30 years old, or 103 years old...
- ♦ If you have never stepped foot in a synagogue, or if this is your 1000<sup>th</sup> time here...
  - ♦ If you are Jewish, or not...
  - ♦ If you are faithful, doubting, or seeking...
- ♦ If you single, married with kids or without, divorced, widowed, or partnered...
  - ♦ If you are black, brown, white, Latinx, Asian, or something else...
- ♦ If you are queer, gay, lesbian, bisexual, transgender, questioning, or straight...
  - ♦ If you have, or had, addictions, or have family members struggling...
  - ♦ If you live in Center City, the suburbs, or you're just visiting our city...
  - ♦ If you are a student, looking for a job, or in a successful position...
  - ♦ If you are fully-abled, disabled, or a person of differing abilities

You are welcome here at Rodeph Shalom!

We would like to follow up with you. Please contact [Alicia Broudy](#).

JILL L. MADERER, Senior Rabbi  
ELI C. FREEDMAN, Rabbi  
ERIN R. FRANKEL, Cantor  
ALAN D. FUCHS, Rabbi Emeritus  
WILLIAM I. KUHN, Rabbi Emeritus  
JEFFREY W. KATZ, Executive Director  
JENNIFER D. JAMES, Director of Youth Education  
ANDREA S. MILLER, Buerger Early Learning Center Jewish Engagement  
ALYSSA S. GELLER, Communications Manager

## RODEPH SHALOM OFFICERS

**President**  
MICHAEL I. HAUPTMAN  
**Immediate Past President**  
LLOYD E. BROTMAN  
**President Elect**  
HENRY B. BERNSTEIN  
**Vice Presidents**  
DEBORAH GORDON KLEHR  
FRANCES G. MARTIN  
**Treasurer**  
DANIEL H. SELTZER  
**Assistant Treasurer & Secretary**  
BONNIE BRIER

## DIRECTORS

JONATHAN M. BRODER  
ERIC W. DICKSTEIN  
CHARLES I. ELLIS  
JENNIFER L. KING  
JONATHAN S. KRAUSE  
ELLEN B. SIMON  
PAUL D. SNITZER  
AARON B. WEISS

Congregation Rodeph Shalom  
615 North Broad Street, Philadelphia, PA 19123-2495  
Telephone: 215-627-6747; Fax: 215-627-1313  
Email: [info@rodephshalom.org](mailto:info@rodephshalom.org); Website: [www.rodephshalom.org](http://www.rodephshalom.org)